

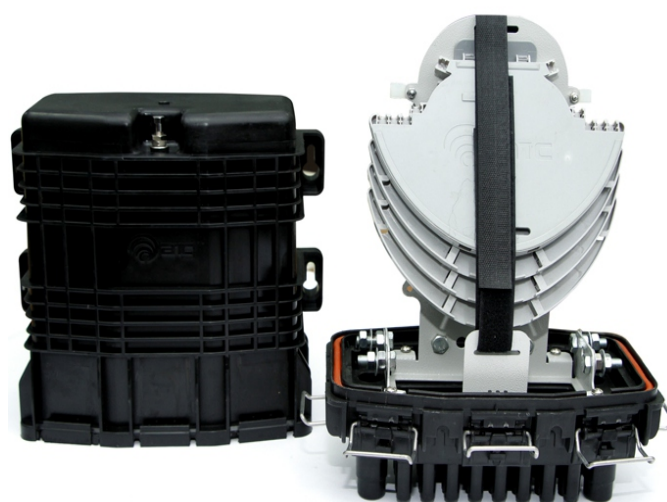


Fiber Access Terminal Joint Closure-FATJC enables telecom operator & service providers to secure and manage the fiber joints and connections in Outside Plant (OSP) for FTTH networks.

Fiber Access Terminal is specially designed and fabricated for drop cable distribution among single and multi-dwelling units and can be used both underground and aerial installations. It can bear extreme weather conditions and provide well secured cable jointing mechanism.

Description:

- ▶ Accommodates up to 144 splices.
- ▶ Splitter equipped with maximum of 2:32 also available.
- ▶ Closures are provided with excellent sealing and cable holding mechanism.
- ▶ Easy re-entry and closing by using mechanical plastic locking clamp.
- ▶ Water proof and dust proof Lockable complying rated IP68.
- ▶ Installation, Opening & Closing of Closures require simple hand Tools.
- ▶ Resistant to Chemicals and Corrosive atmosphere.
- ▶ Specially designed for a Suitable space for Splice Trays and storage of excess uncut loose buffer tubes.
- ▶ Ribs are designed on the Body to provide extra strength.
- ▶ Provision for Mounting Pressure Valve.
- ▶ PROISA-DT Joint closure is provided with special sealing material to make it re-useable.
- ▶ Housing is Made of Polypropylene material.





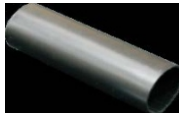


- ▶ Splice / management trays are made of polycarbonate material.
- ▶ Splice trays designed to ensure bend radius > 30 mm.
- ▶ Operating Temperature Range is - 10 C to + 60 C.
- ▶ Provided with main 4 Round Cable Ports with Inner Diameter 20 mm and 1 Oval Cable Port.
- ▶ 24 drop cable ports with diameter 11mm.
- ▶ Accommodates entry of uncut fiber cable through the big Oval cable inlet Port and have the facility to store uncut loose tubes of this cable inside it.
- ▶ UL Tested (Complies IEC 60068 / IEC 600529 & IEC 60950)

Recommended Application:

- ▶ Buried applications
- ▶ Underground applications
- ▶ Aerial applications.

Accessories:

Splice Tray with cover 	Heat Shrink 16/5 	ISA-R Splicing Port 	Cable Clamp Divider (2Pcs) 
Protection Tube 	Fixing Bolts 	Numbering Sheet 	Cable Tie 
UC Clamp 2.0 mm 	Heat Shrink 75 / 25 , 	Heat Shrink Oblong , 33/ 8 	Cable holder 

Product Categorization:

No. Of Connections	Drop Cable Entries	Splitters	No. Of splice Trays	Dimensions		
				Width	Depth	Height
96	24		8	265	160	450
144	24		12	265	160	450
144	24	1:2 Splitter	12	265	160	450
144	24	1:4 Splitter	12	265	160	450
144	24	1:8 Splitter	12	265	160	450
144	24	1:16 Splitter	12	265	160	450
144	24	1:32 Splitter	12	265	160	450
144	24	2:32 Splitter	12	265	160	450

Product Pictures:

